

KINNIKINNICK CHAPTER
IDAHO NATIVE PLANT SOCIETY
2008 ANNUAL REPORT
Compiled by Carol Jenkins, President

2008 was a year of challenge, growth, and success for our chapter. Our president served on the Ad Hoc Committee established by the Bonner County Commissioners to bring consensus to several components of the draft Title 12 Land Code Regulations. The recommendation for use of native plants in the buffer zones along waterways was of particular importance to our chapter.

A committee of nine of our members worked diligently for two months to establish "Native Plants Recommended for Landscaping," a comprehensive list with botanical information to guide property owners in the selection and use of native plants. This list was presented to the Commissioners and Planning Department and became "Appendix B" with the addition of a short list of acceptable non-native plants and was adopted into the code in December, 2008.

In addition to developing this list, twenty-one members of our chapter supported the work of the Ad Hoc Committee by writing letters, appearing at meetings, providing technical information, and presenting a PowerPoint presentation on using native plants in landscaping. Our Arboretum and community landscaped areas were frequently referenced as ideal resources for observing native plants in appropriate settings.

The Ad Hoc Committee worked from January through September and the revised draft code was adopted in December. After the Code adoption the Bonner County Planning Department requested that our chapter assist the department with community education and outreach, forming the Native Plant Advisory Group, to increase awareness and acceptance of the use of native plants in landscaping in our county. This group began meeting in December and agreed on the "Grow Native" theme. Valle Novak, Molly O'Reilly, Nancy Fontaine, Carol Jenkins, and several other chapter members attend these meetings. In December, Valle began a series of "Grow Native" articles in the Bonner Daily Bee. "Grow Native" activities will be one of our major objectives in 2009 as education is a key element of our mission statement.

Our chapter purchased blackout shades for the Community Hall to enhance the quality of programs at our monthly meetings. We purchased a projector for PowerPoint presentations so that we would not have to rely on the availability and condition of rental projectors. Phil Hough donated a beautiful display board which was used for the Lois Wythe celebration. Steve Wiley donated a sound system. Our note cards are being sold at Ponderay Pasta and All Seasons Floral and Garden Center. Ken Haag donated the display racks. We sent a spring fundraiser letter to our membership and started a gift column in the newsletter to boost donation income. We applied for and received a grant from Idaho Community Foundation for Arboretum and educational signage. We applied for an ERIG grant to support the work of Dr. Marian Fuller on the flora of North Idaho, which was not accepted.

In June we honored our Founder, Lois Wythe with a special program and the establishment of the Lois Wythe Master Gardener Scholarship. Also in June we hosted the Idaho Native Plant Society Annual Meeting at Sam Owen Park. Our programs

received record attendance, especially on topics related to landscaping with native plants. Our Conservation, Landscape, and Arboretum Committees were very productive, and Ken Haag continued representing our chapter on the Bonner County Aquatic Invasive Species Task Force. We continued sponsoring the City of Sandpoint's Arbor Day Celebration, and participated in Sandpoint's Earth Day Celebration with a staffed information/display table and a presentation on landscaping with native plants by Don Childress.

So the Kinnikinnick Chapter entered its second decade of fostering understanding and appreciation of native flora and habitats through education, conservation, field trips, and service to the Arboretum and other landscaped areas. This has been accomplished through a growing and supportive membership, enthusiastic volunteerism, and community respect for our education and conservation work and collaborative activities with other agencies. Our chapter thanks these members for their fine service as they move on to other areas of interest: Rae Charlton, Adrienne Lily, Linda Kirchmann and Konrad Dahlstrom. Active members recorded over 3,000 hours of volunteer time in 2008.

2008 BOARD

Carol Jenkins, President
Jim Stern, Vice-President
Ken Haag, Treasurer
Konrad Dahlstrom, Secretary
Janice DeBaun
Dennis Rieger
Nancy Fontaine
Adrienne Lily
Sylvia Chatburn, Arboretum Manager

CHAIRPERSONS

Eileen Atkisson, Landscape
Molly O'Reilly, Conservation and Field Trips
Nancy Fontaine, Education
Don Childress, Programs and Nominating
Adrienne Lily, Newsletter
Wendy Aeschliman, Webmaster
Rae Charlton, Membership
Linda Kirchmann, Hospitality
Janice DeBaun, Publicity
Nancy Rodgers, Historian
Dennis Rieger, Fundraising
Marilyn George, Printer/Plant Photographer
Gary Rogers, Membership Notifications (email)
Sylvia Chatburn, INPS State Annual Meeting and Arboretum
Ken Haag, Bonner County Aquatic Invasive Species Task Force representative
Carol Jenkins, Bonner County Ad Hoc Committee representative

PROGRAMS submitted by Don Childress

January----**Chris Schnepf**, Forestry Area Extension Educator of the University of Idaho, presented an in depth look at ***White Pine Blister Rust***. He began with a history of Idaho's state tree, the White Pine, and then an explanation of the life cycle of the Blister Rust fungi and its introduction to our forests. Chris went on to discuss the measures we can take to promote healthy White Pine in our own forest.

Joe Young, Bonner County commissioner, talked about invasive species as well as funding to address the issue through prevention and education,

February----A multiple presentation was initiated by **Molly O'Reilly** with an explanation of the mission and projects of the Conservation Committee.

Phil Hough gave an overview of the Bonner County Aquatic Invasive Species Task force with emphasis on milfoil.

Brad Bluemer, County Weed Superintendent, discussed the difference between native milfoil and the invasive Eurasian milfoil and showed aerial pictures of before and after treatment in Lake Pend Oreille.

Clare Marley, Bonner County Planning Director, talked about the county landscaping codes, specifically the proposed waterfront setback and requirements for wetlands.

Carol Jenkins concluded by explaining the chapter's role in helping the county by identifying native plants that can be used in the buffer zone and are available locally

March-----**Pat Munts**, small farms and acreage coordinator for the WSU Spokane County Extension and a freelance writer based in Spokane, Washington presented a program on ***Landscaping with Native Plants***. Pat went over specific native plants that are adapted to our particular climatic features using a philosophy of natives and allies. She uses a landscape plan by the zone system with natives layered from ground covers to mid level shrubs and overstory trees.

April-----**Tim Gerlitz**, member of the North Idaho Mycological Association and the Spokane Mycological Association, presented a well received program entitled ***Spring Mushrooms of North Idaho***. He presented information on the black Morel mushroom as well as the Coral, Boletus and snow bank false morals.

May-----**Jerry Reyfeldt**, retired USFS researcher, presented a very informative program entitled ***Plant-Climate Relationships: Bio-geographic, Ecological and Genetic Impacts of Global Warming***. Jerry emphasized the potential effects of global warming on native plants, primarily trees. Using greenhouse gas increases of 1% per year his model predicts temperatures through the 21st century. His philosophy is that climate is the primary factor controlling the distribution of all organisms. Using his model he predicts that by 2090 the plants of the Inland Northwest will be the same as in today's Sonora Desert. The coastal forests will migrate towards the inland northwest and the forests that we know will recede to higher elevations into Canada. Also, the Mohave Desert vegetation will move into the southern Idaho basins.

June-----**Lois Wythe**-----On June 28, 2008, the Kinnikinnick chapter of the INPS celebrated its 10th Anniversary with a tribute and celebration of our founding member, Lois Wythe. Lois facilitated the first informational meeting that led to the establishment of the Kinnikinnick chapter on April 12, 1997. A steering committee was formed to find candidates to lead the new chapter. Phil and Mike Franklin produced the first newsletter that recorded those historic early meetings.

In honor of Lois' contribution to our chapter; **Phil Hough** introduced a variety of speakers who addressed this remarkable woman's contribution to our chapter and community. The speakers included **Gretchen Heller**, a member of the founding group, who spoke on Lois' ability to motivate others. Next, **Diane Green**, organic gardening guru, spoke about Lois as an inspiration. **Bob Wilson**, former Bonner County Extension Educator, spoke of Lois' contributions to the community. **Valle Novak**, a member of the founding cadre of the Kinnikinnick chapter, described Lois' role in founding this chapter and the Arboretum. **Mikki Clark** spoke on the role Lois' played in founding the Sandpoint Farmers Market. **Hattie Goodman**, friend, finished the tributes with a heartfelt look at what Lois means to her, and to all of us.

September.....**Todd Crossett**, Bonner County Commissioner, gave a brief overview of the goals and status of land use planning for our county. He spoke about the change coming to Bonner County due to the rapid population increase seen recently and projected into the future. **Chris Schnepf**, University of Idaho Extension Educator in Forestry, presented a program entitled **Backyard Forests**, those woodland parcels of 5 or less acres. He spoke of how the forest ecology was affected by climate, soils, water, genetics and disturbances. Forest succession was explained as temporary plant communities which are replaced by more stable communities, unless disturbance interrupts the process. Root disease was explained as the number one killer of trees in North Idaho. Chris spoke at length on the value of proper thinning in protecting the health of a forest.

October.....**Larry Evans** of the Western Mycological Society gave an entertaining program of the **Fall Mushrooms of Scotchmans Peak Wilderness area** followed by a field trip to the Ross Cedars. Larry presented a look at the fall mushrooms that inhabit the proposed Scotchmans Peak Wilderness area. He covered many aspects of the northwest's edible mushrooms including their culture, symbiotic relationships, growth habits, gathering and culinary uses. Some of the fungi covered included the Boletus, Suillus, Cantharellus, Amanita, Armillaria, Hygrophorus, Russula, the ever popular Matsutaki and others. The field trip included 25 hardy fungiphiles.

November.....**Phil Hough and Deb Hunsicker** presented a delightful program entitled **Wildflowers of the Northern Rocky Mountains**, a look at some of the flora and fauna they saw during their summer hike along continental divide trail. They took us through some of the fascinating geological features of the region emphasizing the wild flowers and how fires have influenced the landscape.

December.....Annual Christmas social hosted by **Gretchen Heller**.

FIELD TRIPS submitted by Molly O'Reilly

There were several well attended field trips in 2008. Denton Road with Joyce and Konrad, Mineral Point with botanist Richard Merkel, The Pend d'Oreille Trail and Fall Mushrooms (partnered with Friends of Scotchman Peaks) with Larry Evans were the most popular.

Tubbs Hill in Coeur d'Alene (Calypso Chapter) April 27, Sunday, 1:00 PM

Mineral Point 1/2 day, early wildflowers -- Native Plant Appreciation Week – May 3, Saturday. 9am

Denton Road with Joyce Pence, May 10, Saturday. 9am

Mineral Point 1/2 day, wildflowers, led by botanist Richard Merkel, May 16, Fri. 9am

Pend d'Oreille Bay Trail (Hall property) 1/2 day (after meeting at Comm. Hall) May 24, Sat. 12:30pm

Mineral Point 1/2 day, wildflowers, June 14, Sat. 9am

Mickinnick Trail, July 5, Saturday. 9am

Gold Hill (from Sagle Rd. side) July 20, Sunday. 1pm

Fall Mushrooms with Larry Evans, October 25, Saturday, after NPS meeting

For 2009, I recommend continuing ½ day trips, those connected to meetings and those with a knowledgeable leader. Midsummer trips had 2 or 3 participants, vs. 10+ for the popular trips spring and fall.

ARBOR DAY CELEBRATION submitted by Nancy Fontaine

The Kinnikinnick Chapter of the Idaho Native Plant Society held its 10th annual Arbor Day celebration on April 25, 2008 at Lakeview Park in Sandpoint beginning at 10:30 a.m. This year's theme was "Trees Are Terrific....Inside and Out". Invitational letters were sent March 1st to the six area elementary school, private and alternative schools, our county commissioners and mayor as well as the city Parks and Recreation Department. Over 260 elementary school students participated in learning activities and tree tours. Volunteer members and Sandpoint High School forestry students, as guides, directed three groups of students on the tree tours and docents provided information on individual species.

Staff from Priest Lake and Sandpoint Ranger Districts provided demonstrations of tree coring, trees and aquatic resources and fire ecology. Fields Cobb provided information on global warming and its affect on trees. Lake-A-Syst project, Climate Change Action

Network, and Sandpoint Community Tree Committee also provided information on their programs.

Clifty View Nursery in Bonners Ferry donated over 600 tree seedlings which were wrapped by volunteer members and John Hastings and his high school forestry students. They were distributed throughout the event.

At 12:30 p.m. Chapter President Carol Jenkins greeted all of us and Mayor Gretchen Hellar read the Arbor Day proclamation. The Chapter sponsored poetry and poster contests which received many entries. These entries were on display in the trees and on poster boards. The winners were announced - Katie Cyr from Sagle for poetry and Daniel Mire also from Sagle for his poster. They each received a \$25 U.S. savings bond from the Chapter. Bill Love then presented the Tree City USA banner to Mayor Hellar.

Following the program, the group gathered around a tree that the city was planting in honor of Ray Delay. Bill Love gave the presentation and history of the Delay family and their contribution to the community.

INPS STATE ANNUAL MEETING submitted by Sylvia Chatburn

The meeting was held June 20 - 22 at Sam Owen Campground and was a huge success. Four of the seven chapters were represented. There were 46 people at dinner on Saturday night and attended the official annual meeting. Twenty seven people camped for the weekend.

Everyone attended at least one of the three field trips that were offered. Sylvia Chatburn and Phil Hough led a trip to the Lightning creek washout on Saturday morning; Molly O'Reilly and Jim Dubuisson led the afternoon trip to Lightning Creek; Tom Wolfe led two aquatic plant field trips - one in the morning and the other in the afternoon; Konrad Dahlstrom led a longer hike to Antelope Lake. All of these hikes had a nice display of wildflowers in bloom. Some of the aquatic plants were also blooming! Everyone seems to be very pleased with what they saw.

The evening speakers were very informative. On Friday evening Chris Schnepf spoke about white pine restoration and on Saturday evening Dick Kramer spoke about the plans for the restoration of roads in the Lightning Creek drainage.

The dinner on Saturday evening was catered by the Squeeze Inn in Clark Fork. A big thank you to Phil, Molly, Jim, Konrad and Carol for all their help and support.

SCHOLARSHIP submitted by Janice DeBaun

Purpose: This committee was established this year to recommend guidelines for eligibility for the Lois Wythe Native Plant Scholarship. This scholarship will annually fund one person to take the Master Gardeners' class in Bonner County as a way of recognizing the role that Lois plays in the gardening community.

Application Form: The committee developed a short form which asks the applicant these questions: why do you want to take the class, what do you expect to learn from the class, how you will use the knowledge you have gained, and how will native plants

benefit from your participation in this program. In addition, each applicant must agree to devote ten hours of volunteer time to a native plant related project. To be considered, the applicant must have been approved for participation in the class.

Availability of Application Forms: The Master Gardeners mail our application form as part of the information they send to each person expressing interest in their class. In addition, forms are available from the committee chairperson.

Selection Process: If more than three applications are received, the committee will review and recommend the top three to the board of the Kinnikinnick Chapter of the Idaho Native Plant Society. The board is charged with the responsibility of the final selection.

Financial Impact: An estimate is \$150.00 annually. The funds will be given directly to the Master Gardener program which in turn will refund any deposits the winning applicant has previously paid.

Committee Members: Nancy Low, Pat Ramsey, Pat Stevens and Janice DeBaun, chair.

LANDSCAPING submitted by Eileen Atkisson

The 2008 Season at Mickinnick Trailhead and WaterLife Discovery Center was the most organized and rewarding since we landscaped the two areas. Nineteen volunteers from the Kinnikinnick Chapter and five Master Gardeners spent 260 hours of weeding and planting. Weeding was the major task at Mickinnick and the trailhead has never looked this good. Workdays at the Discovery Center produced truckloads of thistles and ended with lovely lunches. Volunteers also added many new natives of all sizes and broadcast native grass seed to regain the ground for natives. Both areas should look great when the snow melts.

ARBORETUM submitted by Sylvia Chatburn

Eleven volunteer gardeners spent one morning per week from the end of April through the end of September keeping the arboretum looking good. Two paid part time coordinators worked from the middle of June until the first of September. They received a lot of favorable comments from the public.

The big project for this season was to label the plants in each habitat. Our new signage impressed many visitors from out of town. Local folks looking to landscape with natives in mind appreciated the signs.

The dandelion problem that we had a few years ago has become very manageable. We have not added any fertilizer so the plants have become weak. Moose spent the winter in the arboretum adding fertilizer and trimming the young cedars. In the dry forest habitat most of the dandelions and the old sod has been dug out.

Old lawn sod from around rose bushes along the rose walk in the meditation grove was piled near one of the cedar benches to form a mound on which we placed a very attractive snag in preparation for the development of a shade garden.

The wall is being filled with plants that have been dug from private property. As in many of the habitats the flowering plants are reseeding and spreading nicely, in some places trying to take over.

There is enough diversity in all areas so that there is always something in bloom from early April until late October. The rose hips make a colorful showing well into winter. The arboretum is always changing. Our goal for next season is to develop the shade garden and add more plant labels. We received another grant from the Idaho Community Foundation to purchase more labels.

CONSERVATION submitted by Molly O'Reilly

The committee held eight meetings, generally well attended, and one outstanding field trip. The summer time field trip was to the proposed Gold Crown Fuels Reduction Project with several Forest Service personnel.

For the first time, the committee participated in annual monitoring of a locally sensitive orchid; a full day's adventure.

The committee also evaluated and commented on eleven agency projects and plans. Some comments required board approval as they broke new ground for the chapter.

Several active members in 2008 are new to the committee. The group supported the chapter effort to develop a list of native plants for landscaping and several members turned out to comment on the Bonner County's changes to its land use codes that give some shoreline setback protection and incorporate native plantings. Support was given to ClimateCAN's local educational efforts on climate change. The committee drafted a climate change position for board approval.

The Committee has positive relationships with local Idaho Department of Lands and Forest Service personnel. This adds credibility to its recommendations and gives committee members the opportunity to converse, learn and put forth our message. The conservation committee continued to monitor and support the chapter's involvement with Bonner County's land use code reform and participation on the Bonner County Aquatic Invasive Species Force.

As the Chapter is the only voice for native plants in North Idaho, the Conservation Committee has an important role to play in articulating the policies of the KC Board and advising the Board on issues important to our mission.

MEMBERSHIP submitted by Rae Charlton

At the end of 2007 we had 130 members (45 Households, 17 Individuals, 21 Seniors, 1 Patron, 1 Life). At the end of 2008 we have 139 members (48 Households, 21 Individuals, 18 Seniors, 3 Patrons, 1 Life).

FUNDRAISING submitted by Dennis Rieger

KCINPS had a great fundraising year. Here is a list of the fundraising efforts:

Donations	\$1679
Albi fundraiser	\$427
Trellis Sales	\$215
Bake Sales	\$551
Note cards/Calendars	\$948

PUBLICITY submitted by Janice DeBaun

Publicity is essential to any organization and ours is no different. The most successful contacts to members have been made via the newsletter, the web site and listserve. In addition the calendar feature of the Bonner County Daily Bee is invaluable.

To provide more information regarding general meetings and educational programs, press releases to the Daily Bee have been sent. It should be remembered that their editorial staff determines what and when items are included in their paper. In other words, you cannot depend on a press release actually going to press.

For all major activities, information is sent to the Spokesman Review, the Bonners Ferry Herald, Sandpoint on Line, and Sandpoint Newline. Because of a format change, the River Journal now includes our meetings in their regular meeting information without sending them any details of the meeting. Program details are also sent to Jason Wiley at the Sandpoint Parks and Recreation Department.

PRINTING submitted by Molly O'Reilly

Marilyn George is at the heart of chapter fundraising. Her photos are on our note cards, bookmarks, calendars and newsletters. The chapter's laser printer lives at her house and on it she prints all of these for us, while dealing with all of the technical and maintenance problems of the printer.

HISTORIAN submitted by Nancy Rodgers

News clippings and newsletters have been saved during 2008. A beautiful historical display board was assembled to honor Lois Wythe and the founding of our chapter. We are looking for newsletters, clippings, and photos for the years 2003, 2004, 2005.

HOSPITALITY submitted by Linda Kirchmann

The following members brought treats for the general meetings:

Jan: Janice DeBaun

Feb: Sylvia Eisele & Sylvia Chatburn

Mar: Rae Charlton

Apr: Konrad Dahlstrom & Joyce Pence, Jackie Earle and Marilyn George

May: Mary Jo Haag & Jackie Earle

June: Nancy Rieger & Nancy Rodgers

Sept: Mary Jo Haag

Oct: Marilyn George & Gaea Swinford

Nov: Sylvia Chatburn & Nancy Rodgers

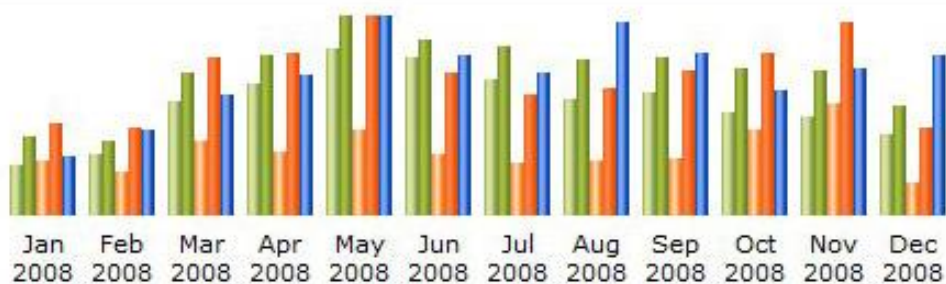
Website Analysis 2008

Wendy Aeschliman, website administrator

The Kinnikinnick Chapter's website www.nativeplantsociety.org is presently composed of a total of 180 files with 62 image files. The website drew the most visitors, over 900, during the month of May. (See below) These May visitors came from 30 nations all over the world.

Google is the most used search engine to refer to us, Windows the most used operating system by visitors, and Internet Explorer the most used browser. It is very helpful that there is a direct link from INPS to our site, and our stats reveal that this is very frequently used! Sandpoint Online also has a direct link to our Arboretum page, also utilized. These direct links are important; perhaps we could do more to encourage partner agencies to link to our site, as well as encourage our members with websites to add links also.

A summary of 2008 statistics for our website native plant society is below:



Month	Unique visitors	Number of visits	Pages	Hits	Bandwidth
Jan 2008	278	443	1587	2727	38.43 MB
Feb 2008	337	409	1267	2545	56.33 MB
Mar 2008	641	795	2163	4620	80.12 MB
Apr 2008	733	889	1856	4800	94.00 MB
May 2008	930	1111	2509	5853	132.26 MB
Jun 2008	878	977	1794	4211	106.22 MB
Jul 2008	759	947	1513	3570	94.57 MB
Aug 2008	642	872	1617	3740	129.02 MB
Sep 2008	690	880	1639	4242	108.39 MB
Oct 2008	579	819	2532	4806	83.11 MB
Nov 2008	553	807	3298	5679	97.87 MB
Dec 2008	447	611	968	2591	106.31 MB
Total	7467	9560	22743	49384	1.10 GB

FINANCIAL REPORT submitted by Ken Haag

	2008 Total	2008 Budget		2008 Total	2008 Budget	
CASH RECEIPTS			CASH DISBURSEMENTS			Notes on Final Report
Membership	\$1,345.00	\$1,300.00	Printing Supplies			
Donations (General)	\$1,183.00	\$600.00	Newsletter, Note Cards,	\$705.19	\$500.00	
Landscape Services		\$300.00	etc	\$56.01	\$75.00	
Coffee Jar	\$26.36		State Sales Tax	\$459.20	\$275.00	
Notecards,			Postage			
Bookmarks,etc	\$325.20	\$600.00	Website	\$16.38	\$120.00	
Calendars	\$623.00	\$600.00	Historian		\$50.00	
Misc	\$30.00	\$50.00	Hospitality		\$70.00	
Fundraiser – Albi	\$1,102.00	\$350.00	Programs	\$80.00	\$300.00	
Grants			Lois Wythe Special		\$200.00	
Investment Interest	\$71.67	\$225.00	Blackout Material	\$350.00	\$100.00	
<i>Arboretum Related</i>			Projector/Case	\$669.18	\$670.00	Large charges to Misc.
Donations (General)	\$295.00	\$300.00	Insurance	\$233.00	\$250.00	that did not have a
Restricted	\$90.00	\$200.00	Rare Plant Conference		0.00	budget
Donation Box	\$7.00	\$15.00	Committees			category were -
Fundraisers			Conservation		\$50.00	Albi Attendees \$675.00
Trellis Sales	\$215.00	\$500.00	Education		\$50.00	Plants for Spring Plant
Bake Sales	\$551.05	\$400.00	Field Trips		\$150.00	Sale
Misc			Landscape		\$50.00	\$335.95
Grants			Misc	\$1,188.92	\$150.00	P.O. Box and keys
ICF	\$480.00	\$500.00	<i>Arboretum Related</i>			\$79.00
Arbor Day	\$150.00	\$150.00	Avista	\$75.45	\$85.00	
ERIG		\$375.00	City of Sandpoint (Water)	\$235.05	\$300.00	Beginning
Donation Jar	\$77.17	\$100.00	State Sales Tax	\$41.10	\$55.00	Balance \$7,834.67
			Plants	\$48.62	\$250.00	Jan 1, 2008
			Plant Labels	\$220.48	\$375.00	Ending
			Signage		\$500.00	Balance \$8,072.58
			Misc - supplies, tools		\$200.00	Dec 31,
“Time Reported”	2695		Arbor Day	\$68.36	\$150.00	2008
“In Kind”	\$974.00		Employee Salary (Net)	\$1,300.87	\$1,500.00	Outstanding
			Workman's Comp	\$300.00	\$250.00	Checks \$587.25
			Payroll Taxes	\$213.42	\$225.00	Dec 31,
			Federal Unemployment		Exempt	2008
			ID Unemployment	\$12.31	\$20.00	Funds
			Sayers' Taxwork	\$150.00	\$150.00	Invested \$2,571.67
<i>Arboretum Related Total</i>	<i>\$1,865.22</i>	<i>\$2,540.00</i>	<i>Arboretum Related Total</i>	<i>\$2,665.66</i>	<i>\$4,060.00</i>	Dec 31,
						2008
TOTAL	\$6,571.45	\$6,565.00	TOTAL	\$6,423.54	\$7,120.00	Chapter
						Cash
CD Redemption	\$2,500.00	\$5,000.00	CD Purchase	\$5,071.67	\$5,000.00	On Hand \$5,500.91
						Dec 31,
INPS Dues Received	\$1,681.75	\$1,050.00	INPS Dues Disbursed	\$1,665.25	\$1,050.00	2008
(YTD Includes Carryover)						INPS Cash
						On Hand \$16.50
						Dec 31,
						2008

