

**KINNIKINNICK CHAPTER
IDAHO NATIVE PLANT SOCIETY
2009 ANNUAL REPORT**

Compiled by Carol Jenkins, President

2009 was a pivotal year for our organization with our separation from the Idaho Native Plant Society, the “Grow Native” campaign, our first native plant sale, and the commitment to produce a book of native plants for landscaping.

As the second largest chapter of INPS we increasingly found ourselves operating with different objectives, goals, resources and constraints. We believed that both INPS and our local organization will become stronger by being able to focus our independent human and financial resources on achieving our own primary objectives. It was our intent locally that we would, through these actions, be able to both reduce dues and increase program support. In May our chapter voted on separation from the Idaho Native Plant Society. 50% of our total membership voted, with 92% of the vote for separation. The winning vote for our organization’s name beginning 1/1/10: **“Kinnikinnick Native Plant Society.”** Members of our board worked diligently to insure a smooth transitional process. New bylaws were approved at the November Annual Meeting. At that meeting we honored Phil and Michael Franklin, not only for their contributions as part of the group of founding members of KCINPS, but to symbolize the past achievements of our organization. We shall continue with energy and enthusiasm as we begin 2010 with a new name and new bylaws.

2009 saw the birth of our “Grow Native” campaign. Clare Marley, Director of Bonner County Planning Department, invited KCINPS to join with members of her staff and others from the community to form the Native Plant Advisory Committee which met throughout the year. A “Grow Native” campaign resulted. Letters were sent to all area retail nurseries, growers, and landscape architects announcing the code changes that require or encourage use of native plants in landscaping with our native plant list enclosed. This will not only serve to inform but to encourage availability of native plants in our community. Valle Novak is writing her column in the Daily Bee with emphasis on our “Grow Native” campaign and using native plants in landscaping. Examples of these are posted on our website with permission of Bonner County Daily Bee. Marilyn George developed “Grow Native” buttons, and we have a “Grow Native” banner and display board for use at all our events. Many of our programs were planned around the “Grow Native” theme. This theme was carried through to our booths at Earth Day, National Trails Day, Dover Home and Garden Show, and Bonner County Fair.

In April our membership and employees of the Bonner County Planning Department turned out on a chilly Saturday morning to perform the physical labor of transforming hard packed weedy ground outside the County Building on Hwy 2 into a lovely native plant demonstration garden for the community at large and more specifically for folks working through the Planning Department on residential and commercial projects. Under the direction of John Hastings of All Seasons Garden and Floral, whose students designed the garden, cardboard,

topsoil, and mulch were spread and native plants and hardscaping added. The before and after photos are truly remarkable.

May brought our first "Grow Native" plant sale and it was a huge success and great fun! Dennis Rieger and his committee made the plant sale look easy. This effort was a wonderful collaboration with Panhandle Special Needs, Inc. and we were so pleased when both their board and ours agreed to continue-and double- the sale for 2010.

Clare Marley expressed the need for an illustrated plant list with additional information regarding successful gardening practices using native plants, so we have undertaken this project with the expectation of receiving grant funding and publishing in the fall of 2010.

In 2009 key volunteers logged in over 3,000 hours of service. It was an exceptional year for folks volunteering to do even more. The Landscape Committee developed guidelines for landscape consultations for our members, and began monthly consultations throughout the growing season. These were very well received and are the epitome of a "Grow Native" outreach. Don Childress and Bob Wilson volunteered to teach native plant landscaping principles, with a demonstration garden, at Spirit Lake High School. Wendy Aeschliman revived the once popular "Plant of the Month" on our website to rave reviews. Joanna Fuchs volunteered to add the "Member Profile" interview to our newsletters, which is often the first item eagerly read.

Artist Marilyn McIntyre created a new logo, a lovely Kinnikinnick spray showing foliage, flowers and berries. In November Marilyn represented our organization at the two day Pend d'Oreille Bay Trail Design Charrette, serving on the Historical and Educational Interpretation Team. Molly O'Reilly and Carol Jenkins made a presentation, prepared by Sylvia Chatburn and her Arboretum Committee with technical assistance from Phil Hough, at the Idaho Rare Plant Conference in Boise in February on the development of our North Idaho Native Plant Arboretum. The conference topic was "Success Stories!"
Carol Jenkins

2009 BOARD

Carol Jenkins, President

Jim Stern, Vice-President

Ken Haag, Treasurer; Bonner County Aquatic Invasive Species Task Force rep.

Dennis Rieger, Secretary

Janice DeBaun

Nancy Fontaine

Joanna Fuchs

Bob Wilson

Marilyn McIntyre

Sylvia Chatburn, Arboretum Manager

CHAIRPERSONS

Eileen Atkisson, Landscape

Molly O'Reilly, Conservation and Field Trips

Nancy Fontaine, Education
Don Childress, Programs
Joanna Fuchs, Newsletter
Wendy Aeschliman, Webmaster
Janet Rogers, Membership
Cheryl Stern, Hospitality
Janice DeBaun, Publicity
Nancy Rodgers, Historian
Dennis Rieger, Fundraising
Bob Wilson, Nominating
Phil Hough, INPS Separation
Marilyn George, Printer/Plant Photographer
Gary Rogers, Membership Notifications (email)
Sylvia Chatburn, Arboretum Committee
Marilyn McIntyre, Logo and Field Trips

Fundraising

Our first annual plant sale was held in May netting almost \$1190 from the sale of native plants. This was divided equally between KCINPS and Panhandle Special Needs which gave KCINPS a net income of almost \$595. Jim Stern and Ken Haag built and sold \$600 worth of trellises which were featured at the plants sale and bake sales. The bake sales brought in almost \$461 this year. Phil and Deb presented a show on their Continental Divide trail hike. This event brought in \$90 to KCINPS. Our last event of the year was the Albi wine tasting. We did not have quite the turnout that had been anticipated but the event still brought in \$161. The donation jar and coffee jar netted \$256 this year. Note cards, bookmarks, etc showed a net income of almost \$499 and the sale of KNPS calendars has shown a profit of almost \$461. This brings the total fundraising income to KNPS to almost \$3122 for 2009. Thanks to all the volunteers at the plant sale, bake sales, meetings and other events that helped us reach this goal.
Dennis Rieger

Arboretum

Fourteen gardeners put in a total of 463 hours this season working in the arboretum and attending planning sessions at committee meetings. Our two coordinators from last year returned this year. They are a great asset to the smooth running of the arboretum and interfacing with the visitors. We are still getting a lot of positive feedback about our signage.

Our project this year was to label the rest of the plants that are growing outside of the habitats such as the wall. Most of the plants have been labeled. The new labeling system has been working well.

Since we changed our name we had to change our entrance signs. They are done and in place. After a little bit of weathering they will look like they have always been there.

We are wintering over some of the plants leftover from the plant sale in the arboretum. It will be interesting to see how they come through the winter.

The new shade garden is developing nicely. More plants will be dug from private property and brought in next season. More hardscape will also be added.

We are experimenting with the idea of putting newspapers down over old sod and covering it with cedar bark in the area between the water wheel and the dry stream bed. It sure does make the stream bed stand out more

The area between the moist forest and the medicinal garden has been dug up by the juvenile probation kids, under the direction of Arlis Harvey, and is ready for planting. Our project for next year will be to plant that area and continue to develop the shade garden and the aspen grove area.

Sylvia Chatburn

Landscape Committee

Committee members opened the Mickinnick Trailhead on May 6 and weeded on the first Wednesday of each month through October 7. A good group of Master Gardeners contributed to the opening while the core group of Kinnikinnick volunteers maintained the landscape at its maximum throughout the season even with the reduction of workdays and the abandonment of the irrigation system. The site was almost too beautiful to mulch on closing day but members did the winterizing with good cheer and satisfaction.

A solid group of our non-professional landscape consultants visited four members' properties in May, June, July and September. They walked the land, surveyed the hardscaping and existing natives and, with the help of each property owner, made suggestions for improving the landscape. The follow-up consisted of a map and a summary of discussions. The consultants became very good at their work. The committee will continue this activity for Kinnikinnick members in 2010, one member per month, with that landowner participating in the process.

46 volunteers logged 380 hours on our projects.
Eileen Atkisson

Conservation Committee

Continuing in its tradition of positive engagement, the Conservation Committee commented on several Forest Service projects, and was in touch with Idaho Department of Lands on their projects in the Priest Lake area. The Committee commented supportively on wash stations for boats entering and leaving local waters. It also supported tightening standards for septic systems to protect waterways from effluent. A major push was with Bonner County in support of planting local natives as vegetative buffers. Some of this work continues at the society level, with support from Conservation Committee members. The committee took a winter trip into the City of Sandpoint's newly acquired property destined to become home of a new sewage treatment plant.

Committee member Gail Bolin spearheaded a native plant area at Dover near city hall, with support from the group. The committee met regularly through the year, with a summer vacation, in its tradition.

Molly O'Reilly

Scholarship Committee

The first Lois Wythe Native Plant Scholarship was awarded to Natalie Larson. She was chosen from seven applicants. Natalie volunteered at the Arboretum and was introduced to the membership at our September meeting. The initial year provided an opportunity for the committee to refine the application form as well as the selection criteria. Special thanks are given to the Master Gardeners who assisted in the distribution of the application forms and in promotion of the scholarship itself.

Janice DeBaun

Field Trips

Denton Road with Joyce Pence Between Hope and Clark Fork	Native Plant Appreciation Week – May 2, Saturday. 9am *
Mineral Point 1/2 day, wildflowers, led by FS botanist Jennifer Costich- Thompson	May 8, Friday. 9am**
N. Idaho Native Plant Arboretum Lakeview Park, Sandpoint	1/2 day (after meeting at Comm. Hall) May 23, Sat. 12:30pm
Mickinnick Trail	Friday, May 29
Pend d'Oreille Bay Trail	National Trails Day-Saturday June 6, 1pm

Field trips in 2009 were focused on spring wildflowers. There were four; starting early with Denton Road and extending through May. They were marginally attended, except for Pend d'Oreille Bay Trail, which is always very popular. Short, close trips seem most well attended.

Molly O'Reilly

Arbor Day

The KCINPS sponsored its 11th annual Arbor Day celebration on April, 24 at Lakeview Park beginning at 10:30 am. This year's theme was "Trees Are Terrific in Cities and Towns." Invitational letters were sent March 17 to area elementary schools, private and alternative schools, county commissioners, mayor, and Sandpoint Parks and Recreation Department. Over 200 elementary students participated in learning activities and tree tours. Volunteer members

and Sandpoint High School forestry students, as guides, directed three groups of students on the tree tours and docents provided information on individual species.

Staff from the Priest Lake Ranger district provided demonstrations of tree coring and fire ecology. Fields Cobb provided information on global warming and its affect on trees. Lake*A*Syst and Climate Change Action Network demonstrated trees and aquatic resources. Pat VanVolkinburg set up a tree cruising and pacing demonstration.

Clifty View Nursery in Bonners donated 600 seedlings and Sandpoint Ranger District another 10 seedlings which were wrapped by our members as well as John Hastings and his high school forestry students. They were distributed throughout the event.

KCINPS sponsored a poetry and poem contest and all entries were on display. At 12:30 President Carol Jenkins welcomed all to our celebration. She announced the winner of our poster contest and read the winning poetry entry. The winners were April of Sagle for poetry and Riley of Sagle for his poster. They each receive a \$25 US savings bond from our chapter. Bob Wilson gave a brief talk on the mission of the Sandpoint Tree Committee. Mayor Gretchen Hellar read the Arbor Day proclamation followed by Bill Love's presentation of the Tree City USA banner to Mayor Hellar.

Following the program, the group gathered at the site in the park for planting a ponderosa pine tree donated by Possability Trees of Naples.
Nancy Fontaine

Publicity

Articles and calendar items for our regular meetings, special speakers, Arbor Day and the first native plant sale were sent to the Bonner County Daily Bee, The Spokesman Review, the Bonners Ferry Herald, Sandpoint On-Line, Sandpoint Newsline, the Co-op, and the River Journal. Special thanks to Valle Novak who was extremely helpful in promoting our activities in her Sunday column. She gave the Grow Native program a real boost.
Janice DeBaun

Newsletter Committee

Newsletter Chair & members of the committee are Joanna Fuchs (Editor), Wendy Aeschliman (layout), Marilyn George (printing), Myrna Garside (mailing). Also Margareta Larson (photographer), Carol Jenkins (NPS president—final look before copy goes to Wendy), and associate members Nancy Rodgers and Gary Rogers. This year the Membership Profile interview has been added by Joanna to share the contributions and achievements of our extraordinary volunteers.

Programs

January: John Hastings, co-owner of All Seasons Nursery, presented the program entitled "Converting lawns into a Native Landscape." A shocking statistic presented was that Americans fertilize and mow 31 million acres of lawn per year. It is estimated that 50% of all fertilizer used end up in our waterways and is a major polluter in the U.S. The goal of a native landscape is density and diversity with 40-75% canopy cover with 0% exposed soil. Natural succession goes from bare ground to weeds to perennials to shrubs to small trees to larger trees to conifers. By allowing this to happen, or helping it, we protect the soil, filter air and water, improve transpiration and buffer wind and temperature extremes. The reason for natives:

- Best adapted to local conditions
- Won't escape and harm natural areas
- Restores ecological balance of the Natural system
- Require no fertilizer
- High habitat and wildlife value
- Generally more drought tolerant

February: John Sudgen of Tristate Water Quality Council presented "Ageing of Lakes through Eutrophication" focused on the Lake Pend Oreille riparian areas. Eutrophic is defined as being characterized by an abundant accumulation of nutrients that supports a dense growth of algae and other organisms which deplete the shallow waters of oxygen in summer. Eutrophication is a geologic process that is speeded up by human inhabitation. With Lake Pend Oreille's 1100 miles of shoreline, eutrophication is a real threat to our lake. Riparian buffer areas prevent erosion by filtering pollutants to slow the process. Buffer size varies with agricultural areas needing 80 feet while studies have shown that a 40 foot barrier is adequate for logging operations. John explained the Lake A' Syst Program to give information to lake front homeowners concerning their specific buffer zone.

March: Kathy Cousins and Derek Antonelli of the Idaho Fish and Game spoke of the history of the Pack River Delta and what is being done to restore a healthy plant community. The Pack River is a historically complex wetland habitat containing varied wildlife. It carries a sediment load of 2,040 tons yearly into Lake Pen Oreille. When Albeni Falls was constructed lake levels were kept artificially high in the summer and produced a wind and wave erosion problem that produced soil loss and destroyed native vegetation on the island. Kathy described the various innovative engineered structures installed to reestablish the historical islands above current high water levels, and the planned revegetation with grass seeds, 1200 stock plants, 1360 one gallon plants, 1000 ten cubic inch plugs, and nearly 17,000 herbaceous plants.

Special Meeting May 13: George Wuerrthner, a full time freelance writer and photographer and specialist in public land issues, gave a special presentation to KINPS entitled "Rethinking Fire and Forest Health."

Some key points presented:

- Wildfires are key to the function of the ecosystem

- Climate is the primary driver of wildfires

- Wildfires are one of nature's most important ecological processes for soil creation.

The west has more forest fires than the east as drought and lightening conditions are often ripe for large fires.

In recent times, structure protection is the largest cost of firefighting.

Tree rings will give fire history. Also charcoal analysis is used and can date back 70,000 years.

The main things we can do in the short term are to make homes less flammable and long term to reduce global warming.

May: "How to Sketch and Photograph Native Plants." Artist and NPS member Marilyn McIntyre presented a slide show of drawings of North Idaho Native Plants and described the techniques of recording plants using the medium of pen and ink and water colors. Jerry Pavia, photographer and author from Bonners Ferry, also presented a slide show of North Idaho landscapes and Native Plants. He spoke to the methods of recording images of our local flora and fauna. After the meeting, Marilyn George and Marilyn McIntyre led a field trip to the Arboretum to instruct interested members in their respective techniques of recording native plants with camera and water color.

June: "Landscaping with Native Plants, a Practical Example" was presented by Kinnikinnick chapter member Don Childress. Don presented a realistic view of starting from scratch to landscape his yard in rural north Idaho. Both successes and failures were presented in an easy to understand light hearted style. Don showed the specific plants that worked for him in various locations and micro-climates around the yard. He showed how to deal with the ever present wildlife problem and the problem of having minimal irrigation water.

September: Kathy Hutton, manager of Plants of the Wild in Tekoa, Washington, gave a presentation entitled "Native Plants for the North Idaho Landscape." Kathy explained the business of Plants of the Wild and its market and then spoke of their propagation program from seeds and how each plant has its own special germination needs. Nativeplants.org has good basic information on native plant propagation. Kathy described native landscaping vs. naturalized landscaping; one that mimics nature and has sustainability. The wrong plant in the wrong place is neither low maintenance nor sustainable. She explained which plants work best in which location. She covered ground covers, shrubs, trees, and grasses and forbs.

October: Mark Weadick of the “Friends of Spokane House” presented, in the first person, cartographer David Thompson at age 71 looking back 29 years to 1807-1812. ‘Thompson’ shared his travels while mapping the Columbia River and establishing trading houses for North West Co. Mark focused attention on the native flora that Thompson described in his journals.

November: Derek Antonelli of the Idaho Fish and Game presented a program on vegetation monitoring on the Pend Oreille Wildlife Areas in Bonner County. The mitigation properties concerned in the talk included the Albeni Cove Habitat Segment and those Habitat Segments of Carter Island, Cocolalla Lake, Denton Slough, Derr Creek, Lower Pack River, Rapid Lightening Creek, Trout Creek, and the Westmond Lake Habitat Segment. Derek described laying out the Sample Areas with five samples per monitoring sites using GPS coordinates. Each site has 240 points that are recorded for each sample area. Each area is sampled every 3-5 years.

Also during the meeting Mike and Phil Franklin were honored for their work over the years on behalf of the Native Plant Society, especially for their initial work on providing our organization with an outstanding newsletter. Lois Wythe, Silvia Chatburn, and Gretchen Hellar all spoke to the contributions the Franklins have provided the Kinnikinnick Chapter of the INPS.
Don Childress

Membership Summary – 2009

	Jan 1, 2009	Dec 31, 2009
Total Member Units	98*	96**
Life	1	1
Patron	3	6
Sustaining	0	3
Household	50	38
Individual	22	24
Senior	22	24
Paid for 2009	43	
Paid for 2010		44

*Total of 2008 members who have not paid for 2009 and members who have paid for 2009.

**Total of 2009 members who have not paid for 2010 and members who have paid for 2010.

Website Analysis 2009

Wendy Aeschliman, website administrator

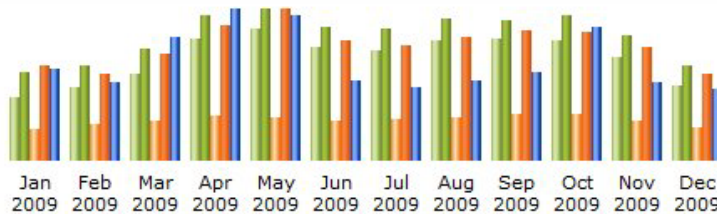
Website: www.nativeplantsociety.org

I compared the 2009 website statistics with 2008 statistics (in parentheses), which can be viewed within the [2008 Annual Report](#). Total visits in 2009 were **12,906** (vs. 9,560 in 2008). The website is presently composed of a total of **232 files** (vs. 180) with **88** (vs. 62) image files. As last year, the website again drew the most unique visitors in the month of May, **1126** (vs. 933). (See below) Visitors came from **33** (vs. 30) nations all over the world, **370** cities/regions.

Google was the most used search engine to refer to us, with Yahoo a distant second. Windows 72% was again the most used operating system by visitors, and Internet Explorer 48% the most used browser, with Firefox 28%. The most used search phrase was *devil's club*, with *kinnikinnick* second! It again was very helpful that there was direct link from INPS to our site; our stats reveal that it was frequently used! Presently there still exists a link to our society within the INPS "Links" section, and we continue to link to INPS as well on our "Links" page. Sandpoint Online has a direct link to our Arboretum page, as does Twin Eagles Wilderness School. In general, however, there are few organizations which link to us. These direct links are important; thus this year I again feel we could do better in encouraging partner agencies, especially environmental, to link to our site, as well as encourage our members with websites to add links also.

An addition mid-year 2009 was a monthly species profile: *Plant of the Month*. I will continue to add one every month. Since most people are finding our website through their browsers, using specific plants as key phrases, the academic info on plant species should be a helpful addition to our educational endeavors on the internet.

A summary of 2009 statistics for our website native plant society is below:



Month	Unique visitors	Number of visits	Pages	Hits	Bandwidth
Jan 2009	536	753	1530	4631	185.08 MB
Feb 2009	623	811	1718	4206	160.47 MB
Mar 2009	736	955	1882	5180	250.94 MB
Apr 2009	1050	1249	2126	6585	307.42 MB
May 2009	1126	1296	2115	7344	295.41 MB
Jun 2009	966	1150	1956	5803	160.91 MB
Jul 2009	942	1137	1964	5557	149.00 MB
Aug 2009	1035	1220	2058	5960	162.53 MB
Sep 2009	1040	1198	2208	6327	180.38 MB
Oct 2009	1033	1250	2274	6277	272.31 MB
Nov 2009	891	1071	1918	5474	159.61 MB
Dec 2009	645	816	1626	4199	145.91 MB
Total	10623	12906	23375	67543	2.37 GB