

Annual Report 2011, KNPS

Compiled by Donald Childress, President

Kinnikinnick Native Plant Society had another successful year in 2011. Our membership held nearly steady despite the general malaise of the economy. We thank Bob and Carol for sending out cards and calling some of the 2009 and 2010 members who had “forgotten” to renew their membership.

We had many good things happen within our organization this year. We also had some sadness. KNPS lost three of its founding, long term members with the passing of Arlis Harvey, founder Lois Wythe and Fields Cobb. They leave a very large void in the ranks of our membership. A memorial fund has been established, with Ken Haag heading a committee to invest the fund for a perpetual return.

Perhaps the most exciting issue of the year was the completion of the two plus year project to publish a book on “Landscaping with Native Plants in the Idaho Panhandle”. Carol, Sylvia and the other contributors produced a remarkable volume that was met with tremendous response as the first 350 copies sold out and required a second printing soon after its release. A grant from the Inland Northwest Community Foundation covered the original publishing costs and proceeds from the book sales will cover future publishing costs. Congratulations to all the members of the Landscape Book committee.

The *Kinnikinnick Journal* continued its excellent run under the editorship of Gail Bolin, layout person Wendy Aeschliman, and printer, Marilyn George. Next year Jill Wilson will assume the editorship. Wendy Aeschliman also has managed our website and continues in this very important role.

This year’s Arbor Day came with its usual weather which has vacillated between crappy and really crappy for the past few years. Mary Toland, our Arbor Day person of the year, has worked with the board and city to change our involvement and celebrate later in the year when the weather might be more cooperative. Discussions are ongoing.

KNPS participated in Earth Day and the Bonner County Fair under the leadership of Carol Jenkins. We showed well in both events.

In April Phil Hough and Deb Hunsicker gave a special fundraising program on the compilation of their three summer hiking experience along the Continental Divide; an excellent program.

The KNPS library display last year was so well received that we were asked to do another display this year. Don and Lorrie responded with perhaps the best effort yet, from a prejudiced viewpoint.

The Lois Wyeth grant was increased by the board of directors this year from \$175 to \$200 and was given to Loren Gonsalves to be used towards tuition for a seed saving class. Loren later offered KNPS members a fieldtrip on seed saving.

The arboretum had another successful year with Sylvia Chatburn at its helm. The board increased the Arb budget so that the pay could be increased for the coordinator. Ken Haag also assumed the responsibility of a new area, the color garden, which will include many of the colorful native perennials.

During the year the board joined in partnership or more precisely, a Memorandum of Understanding, with the Master Naturalists. We share many common causes.

The landscape committee had a very fruitful year with landscape consultations for members Vicky Johnson, Dan and Wendy Aeschliman, Jeff Kuhns and Becky Mills, and the Riegers. The committee is currently working with the Panhandle Animal Shelter on a landscape project at their facility.

Molly O'Reilly and Jim Dubuisson kept the conservation committee on tract and weighed in on the Schweitzer Fuels Reduction project of the USFS and are working with the school system to restore the wetlands at the high school among their other projects.

The KNPS participated in the national Plant a wish program at the local Charter School. Don and Marilyn George provided their expertise in planting three Aspens and several native shrubs for the program.

The social events this year turned out well. Fundraising chairperson, Dennis Rieger, suggested we hold the winetasting event in June and the event sold out. The board enjoyed a BBQ in lieu of the August board meeting at the Childress's and our Christmas party at Gretchen Heller's house was a great success with many members attending.

Konrad Dahlstrom chaired this year's nominating committee and came up with a slate for 2012, that includes Gail Bolin, Cheryl McKee, Konrad Dahlstrom and Don Childress for board positions.

For the year, KNPS members logged an awesome 2,642 hours of volunteer effort. Congratulations for another great year!

Treasurer's Annual Report 2011 KNPS

Bob Wilson

The year ended with the treasury quite flush due to the unanticipated revenues from book sales and the donation of Arlis Harvey. The size of these numbers has overshadowed the budget and made it difficult to see the actual state of things, so I have included two balance sheets -- one is displayed in the same format as the usual monthly report, and a second revised one with the landscape book entries and the Arlis Memorial Fund separated out.

RECEIPTS

Membership remains strong and receipts exceeded budget by \$375. Fundraising was good in many areas but fell well short on the Plant Sale and calendar sales. The Plant Sale, which was expected to be our biggest source of fundraising, brought in only \$757, which is \$400 less than we spent on plants and potting soil the previous year. The presentation by Phil and Deb brought in \$32 more than anticipated. The Albi Social was very successful and generated \$121 over budget in addition to providing an enjoyable evening for many. Notecard sales were even with expected revenues, but calendar sales were below by \$288. Trellis and Bake Sales for the Arboretum exceeded budget by \$220. Overall, fundraising fell short by \$1,614.

Donations overall were much higher than expected, but this is due to the unfortunate passing of Arlis Harvey and Lois Wythe and the subsequent Memorial Fund contributions which totaled \$5,820. All other donation categories (general donations, coffee jar, Arboretum donation box, donation jar (at meetings for Arboretum)) produced less revenue than expected. Overall, we received \$5,963 in donations as compared with our \$590 budgeted. The Arlis Harvey Memorial Fund is being set aside to seed an endowment fund which will be used to help support the Arboretum. No specific use has been set for the Lois Wythe Memorial Fund.

Landscape Book sales exceeded our wildest expectations thanks in large part to Carol's tireless efforts. We generated \$3,226 of revenue, \$2,626 more than anticipated. These funds are dedicated to future printings which we found necessary to do this year as our supply nearly ran out.

EXPENSES

Printing costs (newsletter, notecards, calendar, etc) were less than expected by \$275, but postage, which is largely for the newsletter, exceeded budget by \$71.

Insurance was near the budgeted amount.

State Sales Tax (including Arboretum related sales tax) was \$48 less than anticipated, largely due the lack of plant sales.

Website. Wendy renewed our domain name for two years for \$15. No money had been budgeted for this.

Conference budget was intended to support a representative going to the Rare Plant Conference in southern Idaho. No one attended so we had a surplus of \$475. The \$25 expense was for Bob to attend a Chamber workshop on marketing (for the landscape book).

Hospitality did not incur any expenses in 2011 resulting in a surplus of \$30.

Programs expenses totaled \$49 which paid for speaker lunches. No travel expenses were incurred. Surplus of \$251.

Plant Sale had no expenses for new plants since we are discontinuing resale of plants in the future. The PSNI share was \$0 since we lost money on the sale this year. We only had a \$66 expense for plant labels. Overall, Plant Sale expenses were \$1,984 less than expected. Committees spent no money in 2011. Surplus of \$100.

Arbor Day expenses were \$59 and were largely covered by the City of Sandpoint.

Lois Wythe Grant was increased to \$200, \$25 over the original budgeted amount. This was used to cover Lauren Gonsalves' tuition for a seed saving program in Arizona.

PO Box Rent and Fair Booth expenses both came in very close to budget.

Arboretum - Non-employee expenses were \$33 under budget. We spent more for Avista and tools; and less on plants and plant labels. The report also shows a \$69 expense for the City of Sandpoint which is an end of season shut-off charge. This charge is in error and is supposed to be refunded to us within the next month.

Arboretum - Employee expenses were \$189 less than budget.

SUMMARY

At first glance, the year-end results appear to show \$7,168 surplus of receipts and \$2042 excess of expenses more than budgeted. However, removing the Landscape Book entries from both sides of the spreadsheet, and taking out the Arlis Harvey Memorial Fund produces a more accurate picture of our situation. This shows a revenue shortfall of \$1,833 as well as under budget expenditures of \$3,235, resulting in a net surplus budget of \$1,402 for the year.

Our checking account balance as of 12/28/2011 is \$18,700.13. Of this, \$5,335.00 is dedicated to the Arlis Harvey Memorial Fund, \$2,911.90 of Landscape Book sales will be carried over into the next year to support future printings, and we have \$24.72 of uncashed checks. This leaves us with a usable cash-on-hand balance of \$10,428.51.

2011 Annual Fundraising Dennis Rieger

The fundraising season started with the annual plant sale. This year it was moved up to the Saturday before Mothers Day. Due to a cold wet spring and other extenuating circumstances the plant mortality was very high and there were far fewer plants available than in the past. The plant sales were only \$757.00 and the cost of the plants was \$ 933.00 so there was a substantial loss. It was decided to change the format of the sale for next year such that outside vendors will supply plants and KNPS will not have the liability of purchasing and tending to plants.

The annual winetasting sponsored by John Albi of Pend Oreille Pasta was advertised as a social event but still netted \$236.00 for KNPS.

Other fundraising incomes are as follows;

Presentation by Phil and Deb = \$107.00

General Donations = \$9.25

Coffee Jar =\$40.75

Notecards, bookmarks, etc. = \$405

Calendars =\$138

Misc = \$29.00

Native Plant Art = \$95.00

Arboretumspecific income includes \$30 from the donation box and \$1.00 from the donation jar. Trellis sales brought in \$350.00 and the bake sales brought in a total of \$570.00. Two funds that are arboretum specific are for Arlis Harvey = \$5315.00 and Lois Wythe = \$445.00.

ARBOR DAY CELEBRATION 2011

Mary Toland

The Kinnikinnick Native Plant Society's 13th annual Arbor Day Celebration was held at Lakeview Park and North Idaho Native Plant Arboretum on April 29th, 2011. Teamwork and the finest examples of cooperation went into providing educational activities for school students and community members. This year's theme was "Look To The Forest". Invitations were sent to area public and private schools, city and county officials, Museum staff, the Mayor of Sandpoint and City of Sandpoint Parks and Recreation Department. Approximately 150 students from

area schools participated in the tree tours, Forest Service demonstrations and other educational activities.

KNP volunteers, arboretum gardeners, Forest Service staff, and John Hastings SHS Forestry class set up activities prior to 10 a.m. Between 10a.m.-noon, students and community members had the opportunity to join Arboretum tree tours, Forest Service demonstrations related to fire/ecology, tree coring, and stream/watershed ecology. High School students assisted with tree tours and tree ring exploration/counting. Kathy Hutton, owner of Plants of the Wild, provided a lovely selection of seedlings that were handed out during the celebration. Her generosity provided seedlings of : Western white pine, mockorange, shiny leaf spirea, quaking aspen, and serviceberry.

The official Arbor Day ceremony began at 12:20 p.m. Rae Charlton, KNP Vice-President, welcomed everyone to Arbor Day. Mayor Gretchen Hellar read the official Arbor Day Proclamation, followed by the Tree City USA banner presentation by Bill Love from ID Dept. of Lands.

Arbor Day committee members would like to extend our special thanks to Lois Wythe. Her vision of a Native Plant Arboretum and efforts to make it a reality are the center of every Arbor Day. In addition, we thank Forest Service staff: Dave Cobb, Luke Hixon, AJ Helgenberg, Kevin Davis. City of Sandpoint: Stephen Drinkard, Kim Woodruff, Mayor Hellar, ID Department of Lands: Bill Love. Sandpoint High School: John Hastings and Forestry class students, Bonner County Museum staff , and Kathy Hutton, Plants of the Wild. And, last but not least , we thank the WONDERFUL KNP members who volunteered to help with all the parts of Arbor Day planning, preparation, set up/clean up and presentations!

**Membership
Bob Wilson**

	<u>P</u>	<u>Sus</u>	<u>H</u>	<u>I</u>	<u>Sr</u>	<u>Sp</u>	Voting	
							<u>Memberships</u>	<u>Members</u>
2011	3	3	30	14	15	0	65	
2012	2	4	16	4	6	1	33	
TOTAL	5	7	46	18	21	1	98	146

Key:

- P - Patron
- Sus - Sustaining
- H - Household
- I - Individual
- Sr - Senior
- Sp - Sponsor

Landscaping with Native Plants in the Idaho Panhandle

Carol Jenkins

The Kinnikinnick Native Plant society (KNPS) has written and published a book for Bonner County and the region on successfully using native plants for landscaping, land restoration, watershed protection, and to preserve our regional identity through use of plants indigenous to this environment for all the advantages that native plants provide. This project originated with updates to the Bonner County Land Use Codes. Copies of Landscaping with Native Plants in the Idaho Panhandle have been distributed free of charge to agencies and organizations that work with land use issues as well as libraries, schools, and retail nurseries in the area. Books are being distributed at cost to area retailers. KNPS created this book as an educational outreach to the community with financial support of grants from the

Equinox Fund at Inland Northwest Community Foundation and the Idaho Native Plant Society, and KNPS and its members.

Twelve volunteers dedicated two years to the writing of this 236-page full-color book. As the project developed, sections were expanded or added on successfully choosing and using native plants beyond the scope of the original goal of providing specific information about native plants suitable for incorporating into existing gardens or for establishing new landscapes. Several lists, such as fire resistant and deer resistant plants and lists of plants by color, light and moisture requirements were added to enable the user to readily choose plant materials for specific applications. Area native plant gardens open to the public are listed. Nearly all the photos are from local photographers, primarily the work of Sandpoint resident Marilyn George whose stunning artistry has graced note cards and calendars for years. 370 books were printed with retail sales beginning October 22. In November, sales were so brisk we reprinted 109 copies. By the end of December, 389 copies have been distributed as follows: 72 copies were distributed free of charge, 109 copies were pre-sold to KNPS members, 208 copies were sold by area retailers. In addition to local print publicity, Vanderford's sponsored a book signing which several of our members attended, and the book was featured on radio 1400 with an interview of two of the authors. In January, 2012, the book will be evaluated for a possible second edition.

Kinnikinnick Native Plant Society – 2011 Programs Year End Report

Phil Hough

Jan 22nd

Chris Schnepf from the University of Idaho Extension Office in Coeur D'Alene gave a presentation on the new "Master Forest Stewards Program". Patterned after the successful Master Gardner Program, Master Forest Stewards would become attend classes, do field work and become proficient in managing private timber lands. To maintain

certification, individuals would continue with annual volunteer work projects, benefitting Idaho's vast Family Forests and their unique assets and resources.

39 people

Feb 26th Derek Antonelli, IDFG representative, provided an overview of recent efforts to create an Idaho Master Naturalist program and local chapter. The program is still being developed but Derek showed the many goals and possible curriculum being considered which ranges from earth sciences such as geology to the many fields of biological sciences. Numerous possible activities which would allow individuals to achieve and maintain certification were reviewed – there are many exciting opportunities for Native Plant enthusiasts!

Kathy Cousins, mitigation Staff Biologist for Northern Idaho from IDFG reviewed the progress with the Pack River Delta restoration project. The lessons learned will be valuable as IDFG plans and prepares for other mitigation projects in the Lake Pend O'Reille watershed, including the Clark Fork Delta

42 people

March 26th Bob Boeh VP of Government Affairs and Strategic Outreach for Idaho Forest Group gave a presentation about how they manage their private timber lands for the goal of ecologically sound and sustainable production goal with selective harvest practices. The result is a mixed age stand resistant to disease with beneficial wildlife habitat and higher production capability. The multi media presentation included information slides and a video showing timber mill mechanization offered a glimpse into the working world of the modern mill.

26 people

April 13th Phil and Deb – Special Presentation on the CDT – Long distance hikers Phil Hough and Deb Hunsicker completed the 3,000 mile long

Continental Divide Trail over 3 summers in 2008, 2009 and 2010. Along the way they took many photos of a wide variety of native plant landscapes and close up images of flowering plants. With slides, stories and readings from plant guides they shared their incredible journey with insights into the ecology of the divide including impacts from climate change, insects, fire, grazing and land management conservation of Wilderness areas and National Parks.

80 people

April 23rd Doug Scott, Policy and Research Director of the Campaign for America's Wilderness at the Pew Environment Group helped us to celebrate Earth Day! Serving with U.S. Sen. Gaylord Nelson on the board of the group that organized the original Earth Day, Doug offered us a unique look at the emergence of the environmental and conservation movements. He spoke about the excitement of the first Earth Day and momentum of conservation interest which led to the passage of many landmark environmental protection laws in the 1970s including the Clean Air Act, the Clean Water Act, the National Environmental Protection Act (NEPA), and the Endangered Species Act among other landmark legislation. Doug, who has been involved in every major piece of wilderness legislation in the last four decades, gave an extended look at how Wilderness Designation comes about with a focus on the prospects for the Scotchman Peaks.

44 people

May 28 Dick Kramer spoke about his 3 decade career and how the role of science and conservation has evolved in land management decisions. Dick noted the change in the role of science in Forest Service management as specialists in various fields of natural science became integrated in a team approach to analysis and decision making. As special fields of science came to be part of an integrated and interdisciplinary process, the concept of ecosystem management took root and the emphasis has shifted from resource extraction to forest health which incorporates production in a more sustainable manner.

44 people

June 25th Tom Woolf – ISDA Aquatic Plant Botanist, “Aquatic Plants and Why You Should Care” – Tom gave an overview of the abundant diversity of natural aquatic plants which thrive locally and of the valuable role they play in maintaining the health of our lakes and rivers. Tom also demonstrated the threat which invasive species pose to the ecological functioning of the lake, to plant and fish habitat, as well as potential problems impacting water quality, infrastructure and our economy.

27 people

July and August – NO MEETINGS

Sept 24th Susan Drumheller and Jan Griffitts provided an excellent history of the Pend d'Oreille Bay Trail project, and then discussed its current status. The phrase "Sharing a Shoreline--Connecting Communities" was explained, with the aid of a large map. Important fund-raising is slated for the future, but everyone interested was invited to join Friends of Pend d'Oreille Bay Trail now--support is needed and welcome!

52 people

Oct 22nd Nathan Robertson, Native Plants Horticulturist at the Coeur d'Alene Forest Service Nursery provided an overview of how the nursery supplies native plants for various projects for the forest service and other agencies. They grow and produce container stock, bare root seedlings and seeds as needed for projects ranging from timber stand improvement to rehabilitation of burned areas, to restoring roads, riparian areas and mine tailing sites, throughout the region. The nursery is a leader in developing rust resistant strains of Whitebark Pine and produces seedlings for use in re-establishing this species which is at great peril.

48 people

Nov 26th Lindsey Bengston, a USGS Biological Science Technician from Glacier National Park, walked us through her work on the Global Observation Research Initiative in Alpine Environments, aka GLORIA project. Glacier National Park is the first North American site in this global effort to explore the correlation between climatic changes, vegetation assemblages and biodiversity spatially.

Looking closely at four specific locations in the park the researcher team conducts an in-depth quantitative and qualitative analysis looking to address 4 questions: species richness and composition, movement of species (upward), frequency of species and endemic response. Long-term goals include establishing more years of data, gaining a better understanding of natural variability as well as identifying indicator species to track responses to climate change.

Glacier National Park implemented GLORIA in 2003, conducted the first re-survey in 2009, and has expanded protocol to better understand annual variability. Initial results show changes in species composition and abundance throughout the summit areas. Studying “functional traits” of plant species as well as their taxonomy assists in develop a better regional and global understanding.

Dec 10th Holiday Brunch at Gretchen Heller’s

Landscape Report for 2011

Eileen Atkisson

Last year, the Landscape Committee was much busier than expected. Landscaping Consultant members participated in three private consultations, each more challenging than the previous one. The first was in Sandpoint at the home of Jeff Kuhns and Becky Mills. Next, we climbed to Schweitzer for an alpine approach to the Aeschliman’s condo, and finally we found Vicky Johnson’s huge,

nearly bare parallelogram at Laclede. All recipients are progressing rapidly and we had great fun together, especially over the lunch wrap-ups. The Riegers presented the successful growth of their plot north of Dufort Road, gained since last year, and we celebrated again. The consultants were Gail Bolin, Sylvia Chatburn, Don Childress, Sylvia Eisele, Vicky Johnson, Nancy and Dennis Rieger, Ann Warwick and Bob Wilson

Requests for public work surprised us. Friends of the Pend d'Oreille Trail asked for help on a seriously difficult hardscape. Some of it had already washed into the lake. Director Mandy Evans of the Panhandle Animal Shelter gave us free rein on all of its plots. Bob Wilson, Gail Bolin and other members have already designed landscapes and proposed budgets for preliminary work. Some money is available, so we need the spring and volunteers to begin planting at both sites. Particularly helpful and gratifying are the projects brought to us by individual members who then manage the processes. We are also thankful to the host organizations who offer their own volunteers for maintenance.

Ken Haag, Janice DeBaun, Nancy Fontaine, Jim Stern and the Eiseles kept the Mickinnick Trailhead as a native plant showcase.

All of our members who planted and maintained the Waterlife Discovery Center were relieved and pleased that the Master Naturalists have claimed that beautiful area. We will hear about their work soon.

.Number of Volunteers: 15 Number of Volunteer Hours: 480

KNPS at Earth Day.....Carol Jenkins

Mon, 25 Apr 2011

Members of KNPS enjoyed sharing information about our organization as we do every spring at Sandpoint's Earth Day celebration. Our table was particularly magical this year due to the beautiful blooming native plants Bob Wilson brought from Cedar Mountain Perennials. Another feature was the free raffle for a native plant from our May 7 plant sale. 65 folks put

their name in for the drawing! We signed up one new member. Thanks to Bob, Ken Haag, Don Childress, and Dennis Rieger for their participation at our table.

KNPS at the Fair

Carol Jenkins

Our booth at the Bonner County Fair was made really special this year with the addition of a magnificent banner painted by KNPS Board member and artist Marilyn McIntyre. Inspired by Marilyn George's photo of Syringa and western tiger swallowtail appearing in our 2011 KNPS calendar (August), Marilyn captured the essence of our joy in caring about native plants. Thanks to the following who put the smiling face on native plants by staffing the booth: Vicky Johnson, Molly O'Reilly, Lorrie Stockwell, Deb Hunsicker, Rae Charlton, Pat Stevens, Denise Dombrowski, Don Childress, Gail Bolin, Mary Jo Haag, Mary Toland, Irv Jenkins, and Joyce Pence who did two shifts! Bob Wilson brought in the blooming native plants which attracted many positive comments and questions. Bonner County had another great year with a booth focusing on watershed protection and native plants, giving away native grass and flower seeds.

Website Analysis

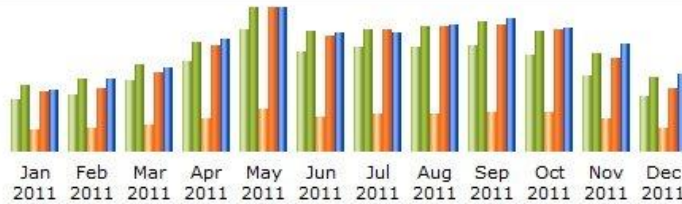
Wendy Aeschliman

Kinnikinnick Native Plant Society's website www.nativeplantsociety.org is presently composed of a total of **293** files including **116** image files. In 2011 the unique visitors totaled **23,920** (Compare to **15,163** in 2010, **10,623** in 2009, and **7,467** in 2008). Total hits were **131,901**. (Compare to **89,097** in 2010). The month of May continues to draw the most visitors, **2,822** in 2011. (Compare to **1,718** in 2010, **1,126** in 2009 and **930** in 2008). The visitors came from **50** Total Countries . (Compare to **41** in 2010.) Top countries are US and Canada.

Google by far is the most used search engine to refer to us, Windows (74%) the most used operating system by visitors (followed by Macintosh at 16.8%), and Internet Explorer (50%) the most used browser. Firefox is 22.8%. iPhone and Blackberry stats are 1.2% and 0.4%, respectively; Android is also 0.4%.

A summary of 2011 statistics for our website native plant society is below:

Monthly history



Month	Unique visitors	Number of visits	Pages	Hits	Bandwidth
Jan 2011	1218	1539	2347	6458	203.85 MB
Feb 2011	1307	1673	2529	6789	237.44 MB
Mar 2011	1638	2013	2905	8487	273.34 MB
Apr 2011	2089	2511	3613	11470	369.84 MB
May 2011	2822	3322	4665	15566	471.42 MB
Jun 2011	2319	2774	3645	12477	391.14 MB
Jul 2011	2407	2839	4079	13223	388.57 MB
Aug 2011	2410	2901	4057	13543	415.48 MB
Sep 2011	2459	3021	4156	13741	439.52 MB
Oct 2011	2219	2799	4286	13159	407.25 MB
Nov 2011	1755	2285	3563	10093	354.42 MB
Dec 2011	1277	1715	2586	6895	252.82 MB
Total	23920	29392	42431	131901	4.11 GB

The top search keyphrases are:

Search Keyphrases (Top 10)		
full list		
400 different keyphrases	Search	Percent
kinnikinnick	167	17.3 %
devil s club	78	8.1 %
kinnikinnick plant	50	5.2 %
devils club	36	3.7 %
douglas spirea	20	2 %
pearly everlasting	19	1.9 %
wild blue flax	12	1.2 %
devil s club tea	11	1.1 %
kinnikinnick native plant society	11	1.1 %
orange honeysuckle	9	0.9 %
Other phrases	548	57 %

Field Trip report
Marilyn McIntyre

Three field trips were held this season as follows:

A spring flower walk along the old Denton Road was led by Joyce Pence and Konrad Dahlstrom attended by 11 people. This was a late and very wet spring and the flowers were just opening in late April.

On June 6, a hike was led to the top of Cloud's Rest by Ann and Neal Whimberly and Connie and John Burkhart from the Friends of Scotchman's Peak. Those attending were treated to lots of good information and views of the Ice Age floods of 12,000 years ago.

On August 6, Bob Wilson led a small, enthusiastic group to the top of Lunch Peak for a walk on the ridge trail to the north of the lookout. Timing was perfect and the higher elevation flowers were just coming into full flower. 39 separate plants were listed. On my return to the same site on September 24th, I ate just ripened huckleberries and grouse whortleberries.